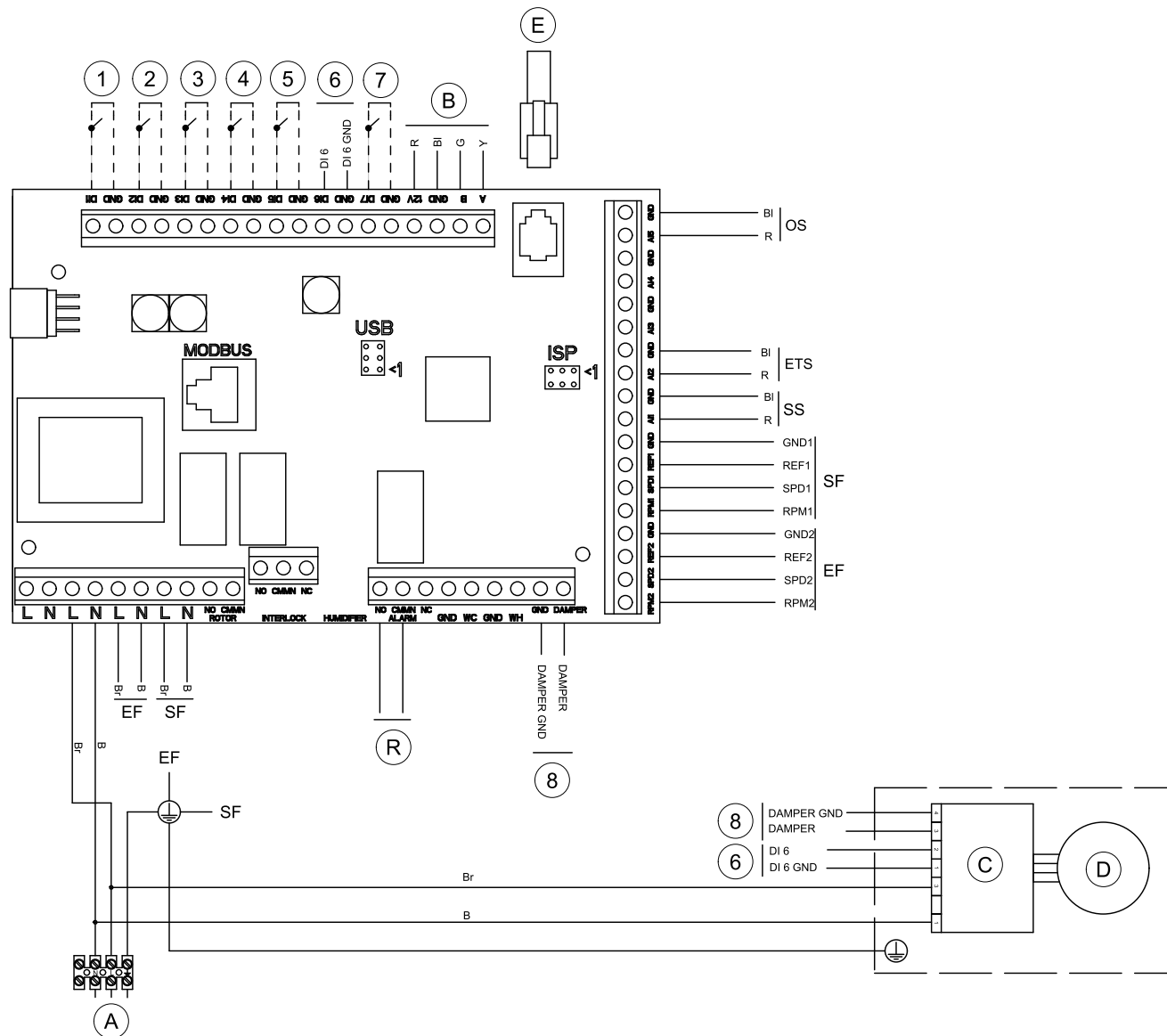
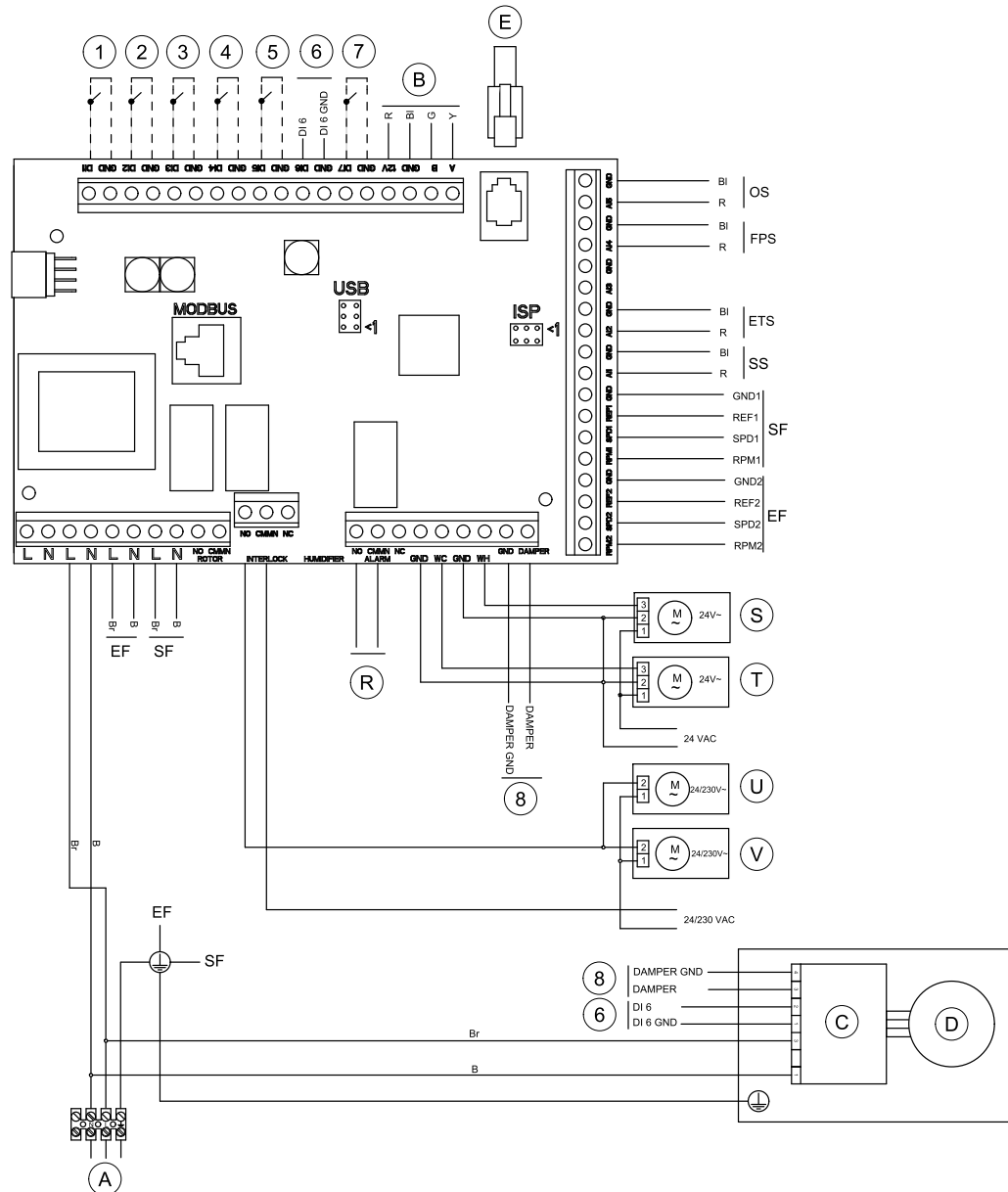


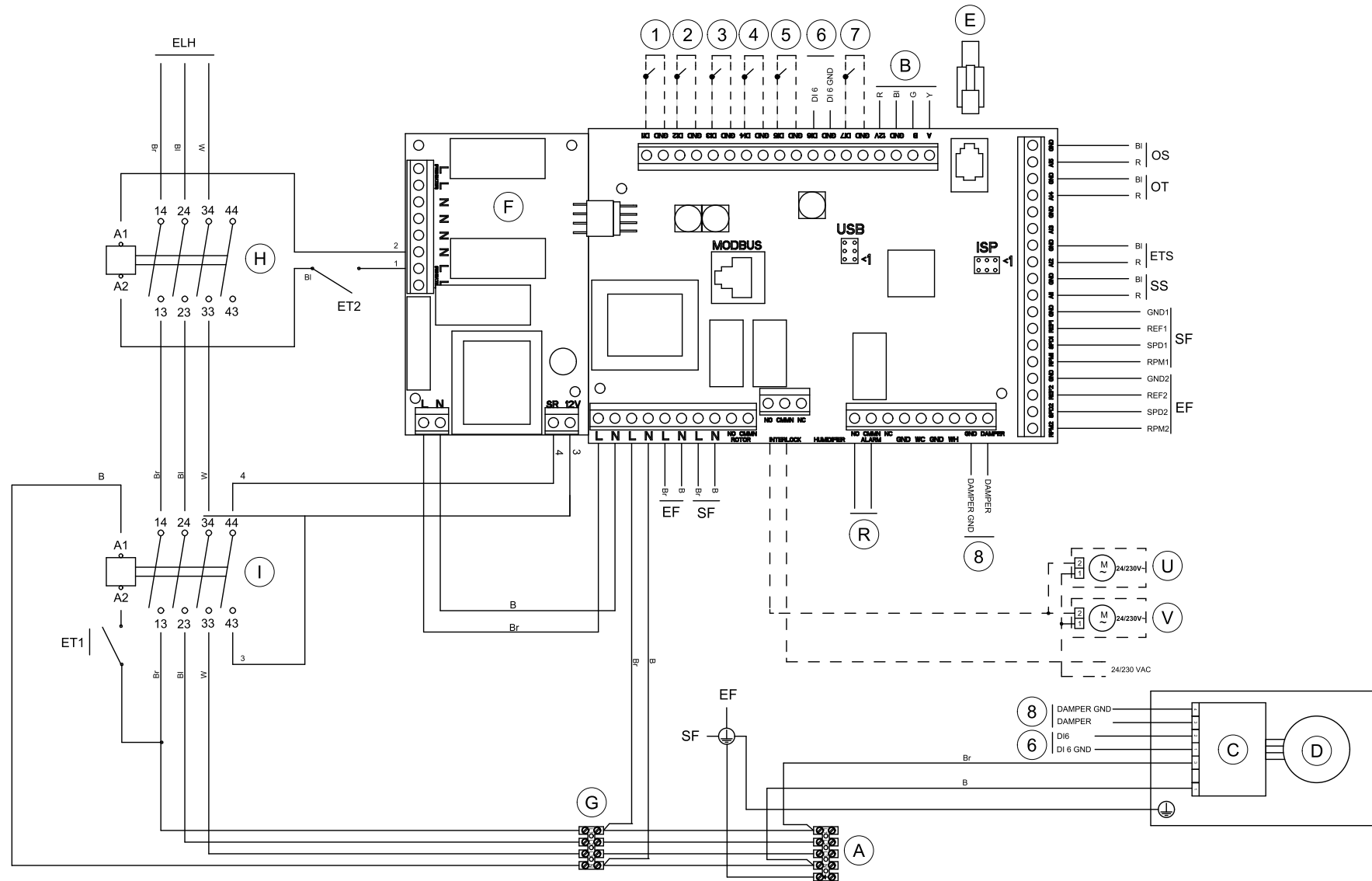
Standart configuration



Units with HW re-heater + WC



Units with EL re-heater



Symbol descriptions

Symbol	Description
SF	Supply air fan.
EF	Extract air fan.
SS	Supply air temperature sensor. ¹
ETS	Extract air temperature sensor.
ELH	Electrical re-heater battery.
OT	Overheat protection sensor. ²
ET1	Emergency thermostat, manual reset 120° C (normally closed contact). ²
ET2	Emergency thermostat, automatic reset 60° C (normally closed contact). ²
OS	Outdoor air sensor.
FPS	Frost protection sensor, type TG-A130 ³
(A)	Mains supply 230 V~ . ⁴
(B)	Possible connection to control panel. ⁵
(C)	Motor control (bypass damper).
(D)	Damper motor 230V~ (bypass damper).
(E)	Connection to control panel (4 pole modular jack).
(F)	Circuit board, PCU – PB. ²
(R)	Sum alarm, Max 24V, 1A.
(S)	Water valve actuator, heating.
(T)	Water valve actuator, cooling.
(U)	Damper motor Outside air.

Symbol	Description
(V)	Damper motor Exhaust air.
(G)	Mains supply for electrical re-heater battery (400 V 3~ N). ²
(H)	Contactor for electrical re-heater battery on/off switch. ²
(I)	Contactor for emergency thermostat cut out (ET1). ²
(1)	Fan configuration: (std.: EF = High, SF = High).
(2)	Fan configuration: (std.: EF = Low, SF = Low).
(3)	Fan configuration: (std.: EF = Low, SF = High).
(4)	Disconnected re-heater battery.
(5)	Extended running.
(6)	Damper guard (Bypass damper).
(7)	Home/leave.
(8)	Damper control (Bypass damper).
B	Blue.
Br	Brown.
Bl	Black.
R	Red.
Y	Yellow.
G	Green.
W	White.

1. For water heating/cooling battery, type TG-K360.
2. Units with electrical re-heater battery.
3. Water heating battery.
4. For units with installed electrical re-heater battery mains supply 400 V 3~ is connected.
5. In case the modular contact is not used.